

Paw Print

by Helene Knott

Animals leave their paw prints everywhere but particularly on our hearts and our souls. Every shelter pet deserves a heart and a home they can leave their paw prints on, as well as a Kennel Quilt to keep them warm.

Make one for your pet, and then make another to donate to a local animal shelter in your area.

*If you are designing your own, be sure to check out the **Guidelines for Small Kennel Quilts** on the next page to create a safe quilt for pets!*

— Kennel Quilts



Paw Print Kennel Quilt
12" x 18"

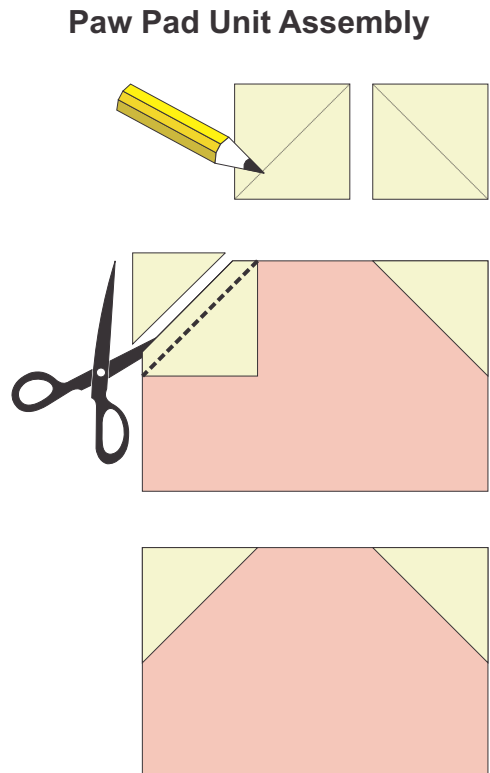


Materials List
Use pre-washed, 100% cotton fabrics and batting.

- 2-1/2" x 24" Fabric A for background
- 6" x 12" Fabric B for paw print
- Fat Quarter Fabric C for borders
- 12-1/2" x 18-1/2" rectangle backing fabric
- 12-1/2" x 18-1/2" rectangle batting

Cutting

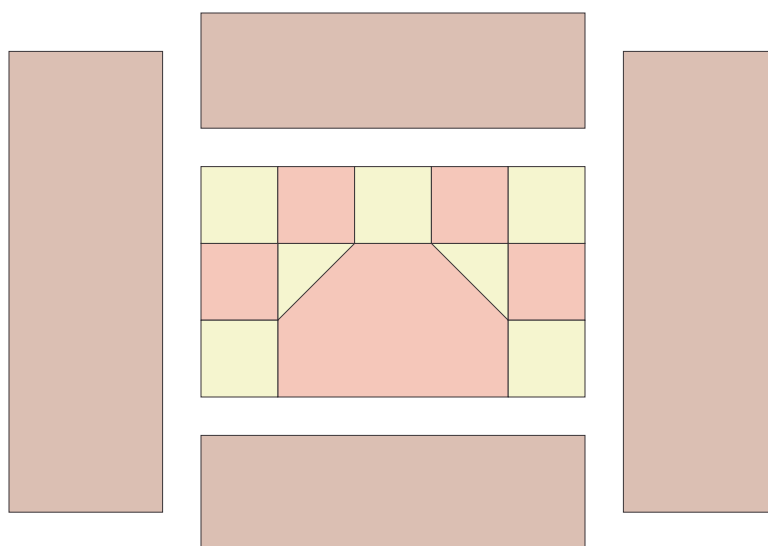
1. From Fabric A, cut
 - 7 (seven) 2-1/2" squares.
2. From Fabric B, cut
 - 1 (one) 4-1/2" x 6-1/2" rectangle.
 - 4 (four) 2-1/2" squares.
3. From Fabric C, cut
 - 2 (two) 3-1/2" x 10-1/2" strips.
 - 2 (two) 4-1/2" x 12-1/2" strips.



Piecing Directions

1. Draw a diagonal line corner to corner on the wrong side of 2 Fabric A squares as shown.
2. Place each square right sides together on top of Fabric B rectangle, 1 on the right top corner and the other on the top left corner.
3. Sew along the drawn lines, trim away the corners to a 1/4" seam allowance. Flip and press seams toward the Fabric B rectangle to make the paw pad unit as shown.
4. Sew a Fabric A square to a Fabric B square to make the left side of the paw print. Press seam toward Fabric B. Repeat to make the right side. Sew these units to both sides of the paw pad as shown, placing the Fabric B squares at the top. Press seams toward the center unit.
5. Sew the remaining 3 Fabric A squares to the remaining 2 Fabric B squares, alternating the squares as shown. Press seams toward Fabric B.
6. Sew the step 5 strip to the top of the paw unit. Press seam toward the center paw pad.
7. Assemble the outer borders in the sequence shown with the 3-1/2" x 10-1/2" Fabric C strips on the top and bottom and the 4-1/2" x 12-1/2" Fabric C strips on the sides. Press seams toward the borders.
8. Place the quilt backing right side up on a flat surface. With right sides together, align the raw edges of the quilt top and the quilt backing. Place the batting on top of the quilt top, again aligning the raw edges. Pin in place.
9. Sew the top, backing, and batting together leaving a 4" opening for turning. Backstitch on either side of the opening. Make sure you have caught the batting when stitching the seam. Trim corners.
10. Turn the quilt right side out. Carefully poke out the corners. Whipstitch the opening closed. Press.

**Paw Print Kennel Quilt
Assembly Diagram**

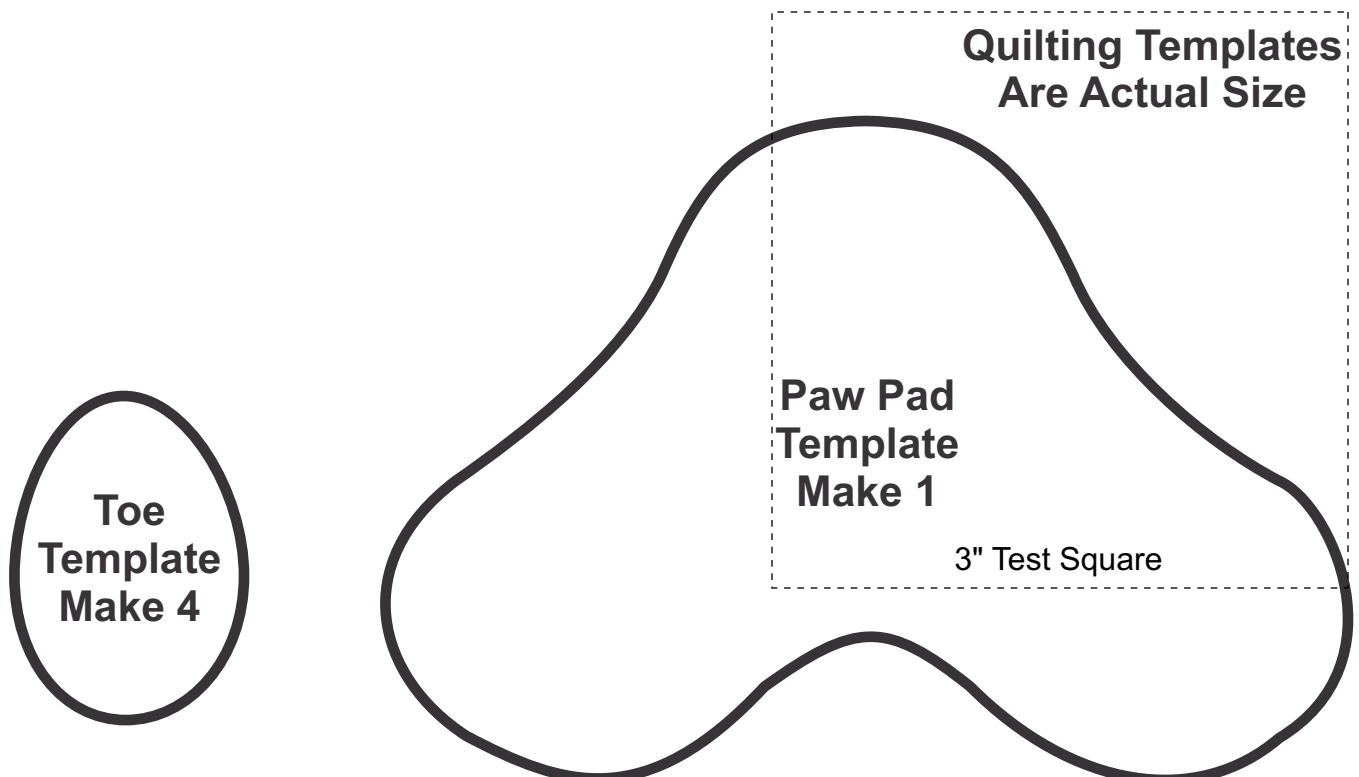
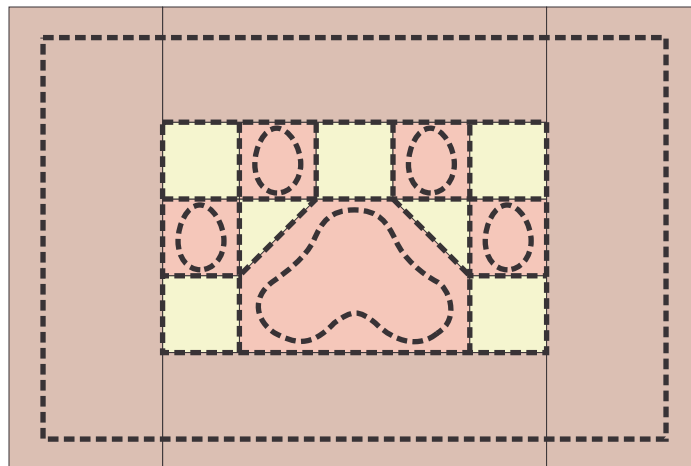


Quilting

Quilt the pieces in the ditch and quilt around the perimeter of the quilt 3/4" in from the edge of the quilt. For added whimsy, you can quilt the paw print with the toes and paw pad design provided using a bold thread for visibility.

TIP: To quilt the toes and pad with ease, trace the quilting designs onto freezer paper and cut directly on the line. Make 4 toe templates and 1 for the paw pad. Iron the freezer paper templates directly onto the quilt where desired and stitch outside the perimeter of the paper. Try not to sew through the paper. The templates can be peeled off and reused numerous times.

**Paw Print Kennel Quilt
Quilting Diagram**



Guidelines for Small Kennel Quilts:

- ▶ Materials used should be 100% cotton (biodegradable).
- ▶ Pre-wash fabrics (pets can have allergies just like humans).
- ▶ Finished size should be 12" x 18". This fits the most commonly used small kennel used at shelters.
- ▶ When piecing, use a small stitch length (e.g. 14 stitches/inch).
- ▶ Do not use binding as it can be hazardous to pets if it becomes loose. Layer, sew around the edge using a small stitch length, and turn quilts pillow-cover style. Whipstitch the opening with small, tight stitches.
- ▶ Use only simple appliqués that are secured with tight stitches along the edges. Avoid using fusibles.
- ▶ Keep the quilting simple and use small tight quilting stitches that won't catch on pet claws. Do not tie quilts as the ends can get caught in claws or chewed off.
- ▶ Do not use any metallic threads or other embellishments (e.g. beads, charms, buttons, ribbons, lace, trims, etc.) of any kind. Do not add handles or loops to the quilt.

Kennel Quilts

Kennel Quilts and **Petfinder Foundation** have joined together to help the animal victims of disasters. When Hurricane Sandy hit the East Coast (2012), **Petfinder Foundation** was there. Seeing a need for the animals and shelters that were affected by this storm, they contacted **Kennel Quilts** and asked for Kennel Quilts for various shelters.

Kennel Quilts is a volunteer organization that is available when disasters strike. It is a way to join a larger effort to help our animal friends in times of need by doing what we love.

Be part of the team that helps animals in disasters.

Kennel Quilts USA: www.kennelquilts.com

Kennel Quilts Canada: <https://www.facebook.com/groups/854699153252365>

Petfinder
FOUNDATION

HELP A HOMELESS
PET

